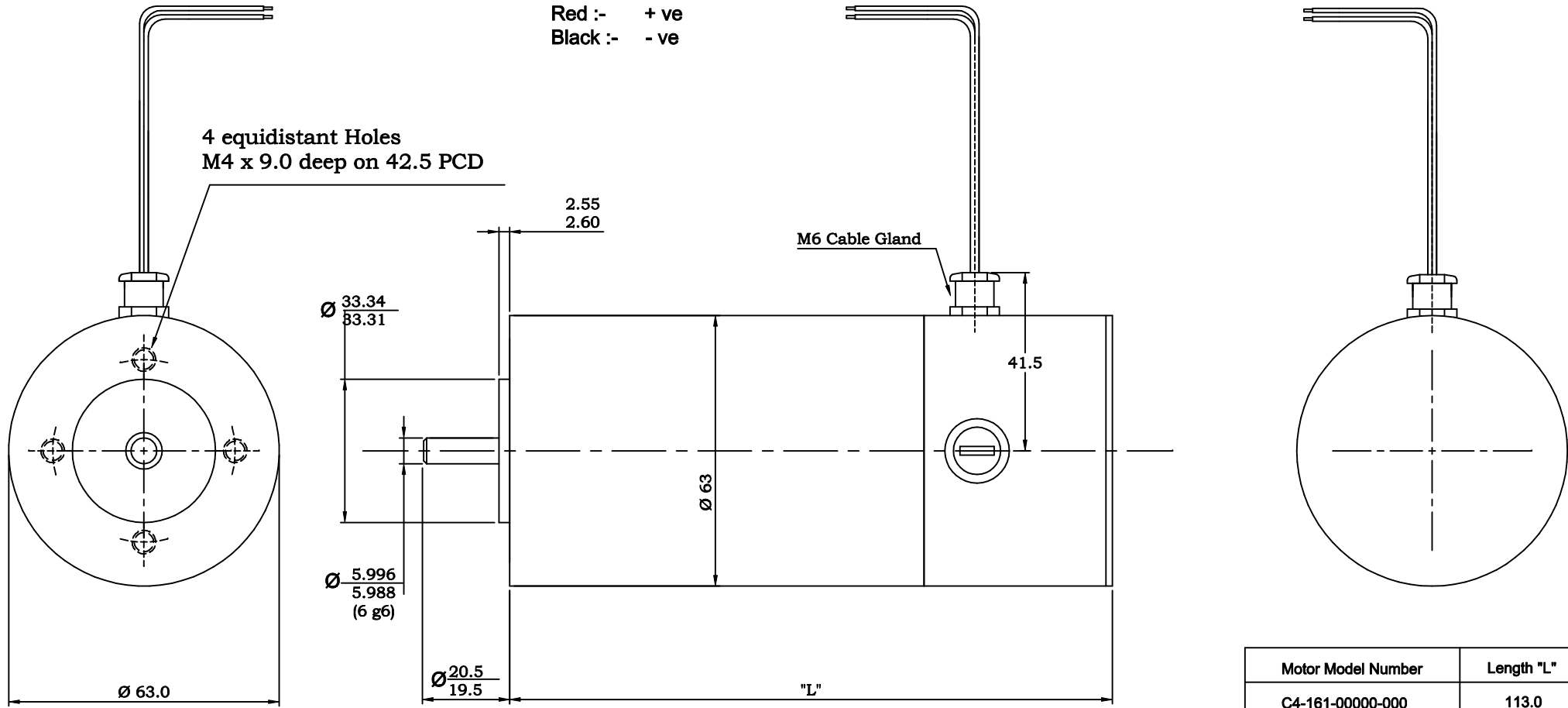


POWER LEAD CONFIGURATION

Size :- 20 AWG
 Red :- + ve
 Black :- - ve



Motor Model Number	Length "L"
C4-161-00000-000	113.0
C4-162-00000-000	140.5

Notes:

1. Clockwise rotation as viewed from output shaft with positive voltage applied to red lead with respect to black lead.

2. All dimensions in mm.

					Tolerances. X.X = ± 0.3 mm X.XX = ± 0.1 mm Ang. Dim. = ± 1°		Scale : NTS		Weight :	
							Material :			
							Remove all burrs and sharp corners			
					Date	Name	Rare Earth Motor , C4-16X			
					Drawn	22/6/06				POB
					App'd					
					Norm					
Issue	ECO. No.	Date	Name	App'd	Norm		C4-16X-00000-000			
Callan Technology Ltd.							Sheet 1 of 1			