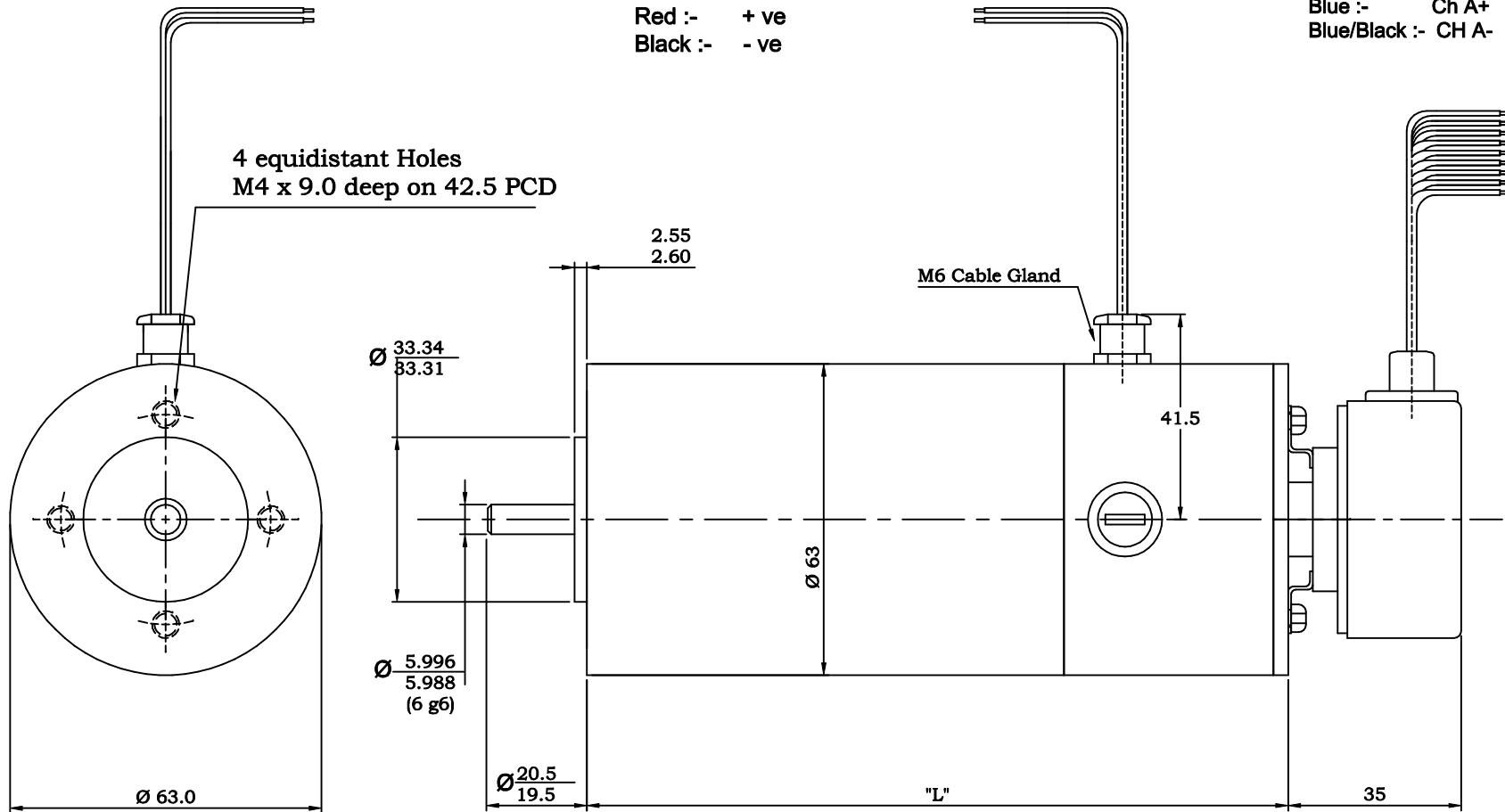


POWER LEAD CONFIGURATION

Size :- 20 AWG
 Red :- + ve
 Black :- - ve

ENCODER LEAD CONFIGURATION

| | | | |
|---------------|---------|-----------------|-------|
| Red :- | + 5V DC | Green :- | Ch B+ |
| Black :- | RTN | Green/Black:- | Ch B- |
| Blue :- | Ch A+ | Yellow :- | Ch Z+ |
| Blue/Black :- | Ch A- | Yellow/Black :- | Ch Z- |



| Motor Model Number | Length "L" |
|--------------------|------------|
| C4-161x-0000T-000 | 114.5 |
| C4-162x-0000T-000 | 142.0 |

Notes:

1. Clockwise rotation as viewed from output shaft with positive voltage applied to red lead with respect to black lead.
 With this rotation, encoder channel B leads encoder channel A by 90° electrical. (1024 ppr)

2. All dimensions in mm.

| | | | | | | | | |
|-------------------------------|----------|------|------|-------|--|--|--|----------|
| | | | | | Tolerances. X.X = ± 0.3 mm X.XX = ± 0.1 mm Ang. Dim. = ± 1° | | Scale : NTS | Weight : |
| | | | | | Drawn 22/6/06 App'd | | Material : Remove all burrs and sharp corners | |
| Issue | ECO. No. | Date | Name | App'd | Norm | | Rare Earth Motor, C4-16X with Flexmount Encoder | |
| Callan Technology Ltd. | | | | | | | C4-16X-0000T-000 | |
| | | | | | | | Sheet 1 of 1 | |