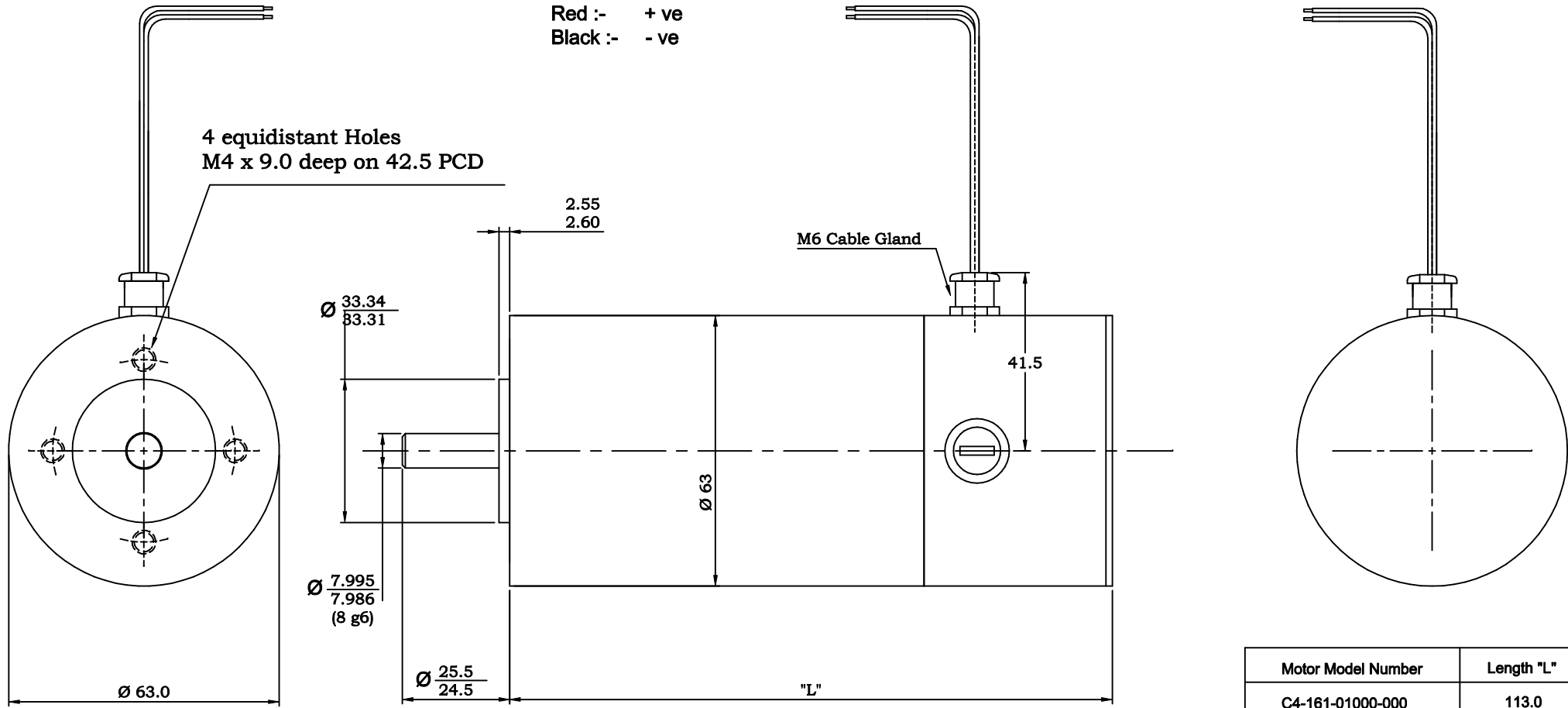


**POWER LEAD CONFIGURATION**

Size :- 20 AWG  
 Red :- + ve  
 Black :- - ve



Motor Model Number	Length "L"
C4-161-01000-000	113.0
C4-162-01000-000	140.5

**Notes:**

1. Clockwise rotation as viewed from output shaft with positive voltage applied to red lead with respect to black lead.

2. All dimensions in mm.

					Tolerances. X.X = ± 0.3 mm X.XX = ± 0.1 mm Ang. Dim. = ± 1°		Scale : NTS		Weight :		
					Date 22/6/06		Name POB		Remove all burrs and sharp corners		
					Drawn		App'd		Rare Earth Motor , C4-16X		
Issue	ECO. No.	Date	Name	App'd	Norm						
Callan Technology Ltd.								C4-16X-01000-000			Sheet 1 of 1