

POWER LEAD CONFIGURATION

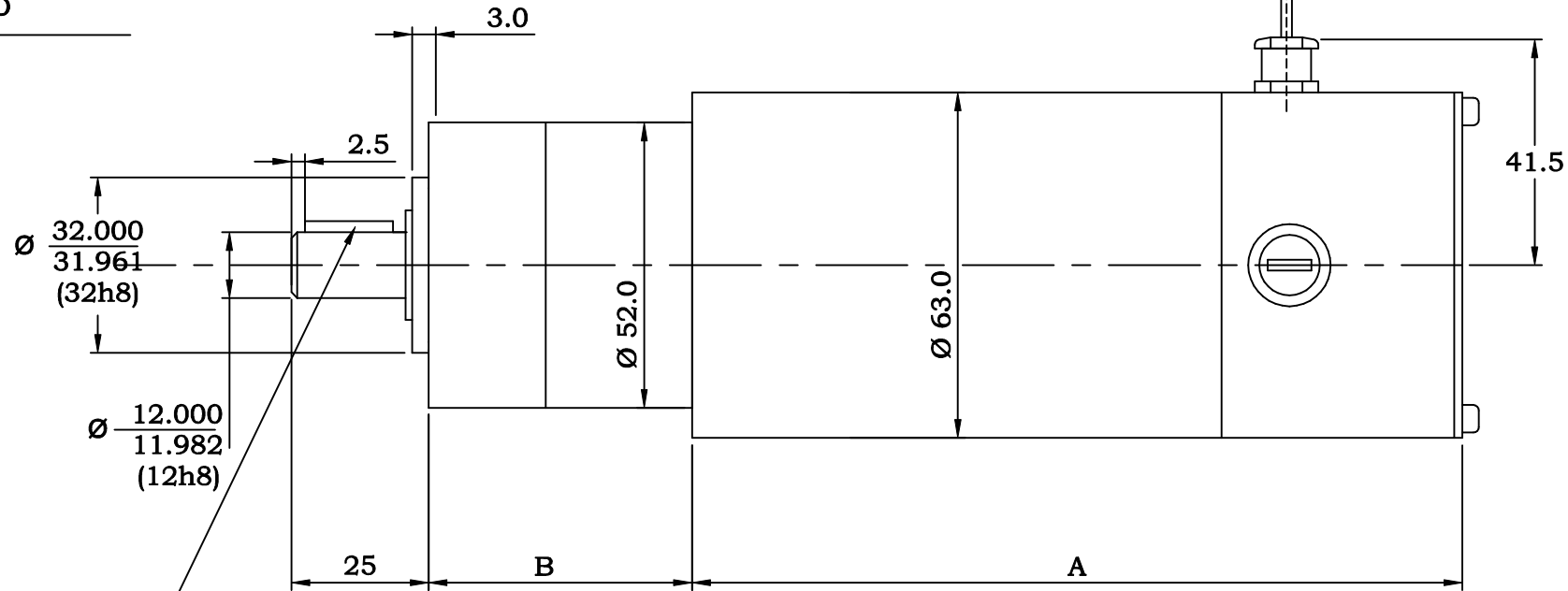
Size :- 20 AWG

Red :- + ve

Black :- - ve

4 equidistant Holes
M5 x 10.0 Min. Deep
on 40.0 PCD

Key & keyway A 4x4x16
Din 6885 Page 1



	"A"	"B"
C4-161-AA000-000	113.0	48
C4-162-AA000-000	140.5	48

Notes:

1. Clockwise rotation as viewed from output shaft with positive voltage applied to red lead with respect to black lead.
2. All dimensions in mm.
3. Gearbox :- 1 stage, planetary , i = 7:1 (rounded)

				Tolerances. X.X = ± 0.3 mm X.XX = ± 0.1 mm Ang. Dim. = ± 1°		Scale : 1.5 : 1		Weight :		
				Date 29/9/06		Name POB		Material : Remove all burrs and sharp corners		
				Drawn		App'd		Gear Motor Outline C4-16x-AA000-000		
Issue	ECO. No.	Date	Name	App'd	Norm			C4-16x-AA000-000		
Callan Technology Ltd.								C4-16x-AA000-000		Sheet 1 of 1